

4015-4059 W Dublin-Granville Rd
Dublin, OH 43017

For Lease



STONERIDGE MEDICAL & OFFICE CENTER BUILT-OUT MEDICAL SPACE AVAILABLE NOW

Lease Rates:
\$12.95 PSF Net

Available Medical & Office Space:
3,939 SF

2024 Estimated Operating
Expenses: \$7.99 PSF
(excludes utilities/janitorial)

- Well located in Dublin between Sawmill Rd and US 33; 1 mile to Sawmill Rd/I-270 interchange.
- Visible to 23,000 vehicles per day on Dublin-Granville Rd
- Adjacent to new \$300MM Dublin Bridge Park Development
- Minutes to Dublin Methodist Hospital
- Existing medical office and office space available.
- Many recent upgrades including new HVAC including ionization for clean air, LED lights and solar.

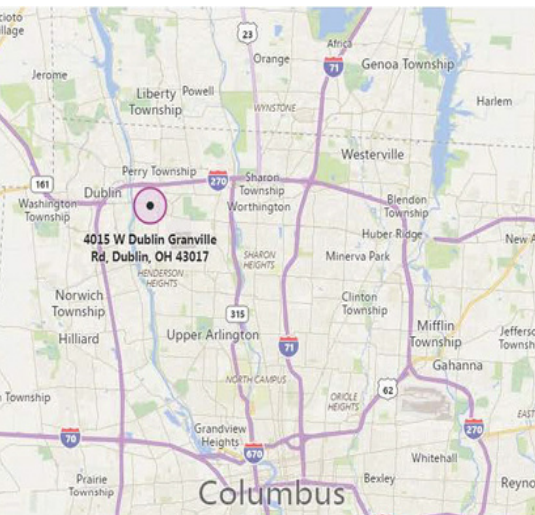
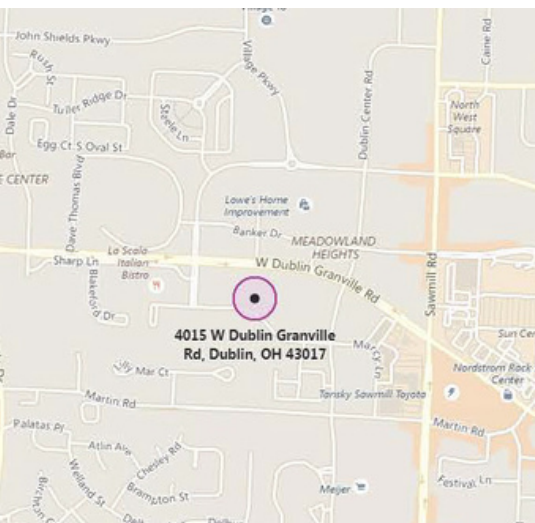


Brad Kitchen, SIOR
614.545.2155
bkitchen@AlterraRE.com

Alterra Real Estate
614.365.9000
www.AltterraRE.com

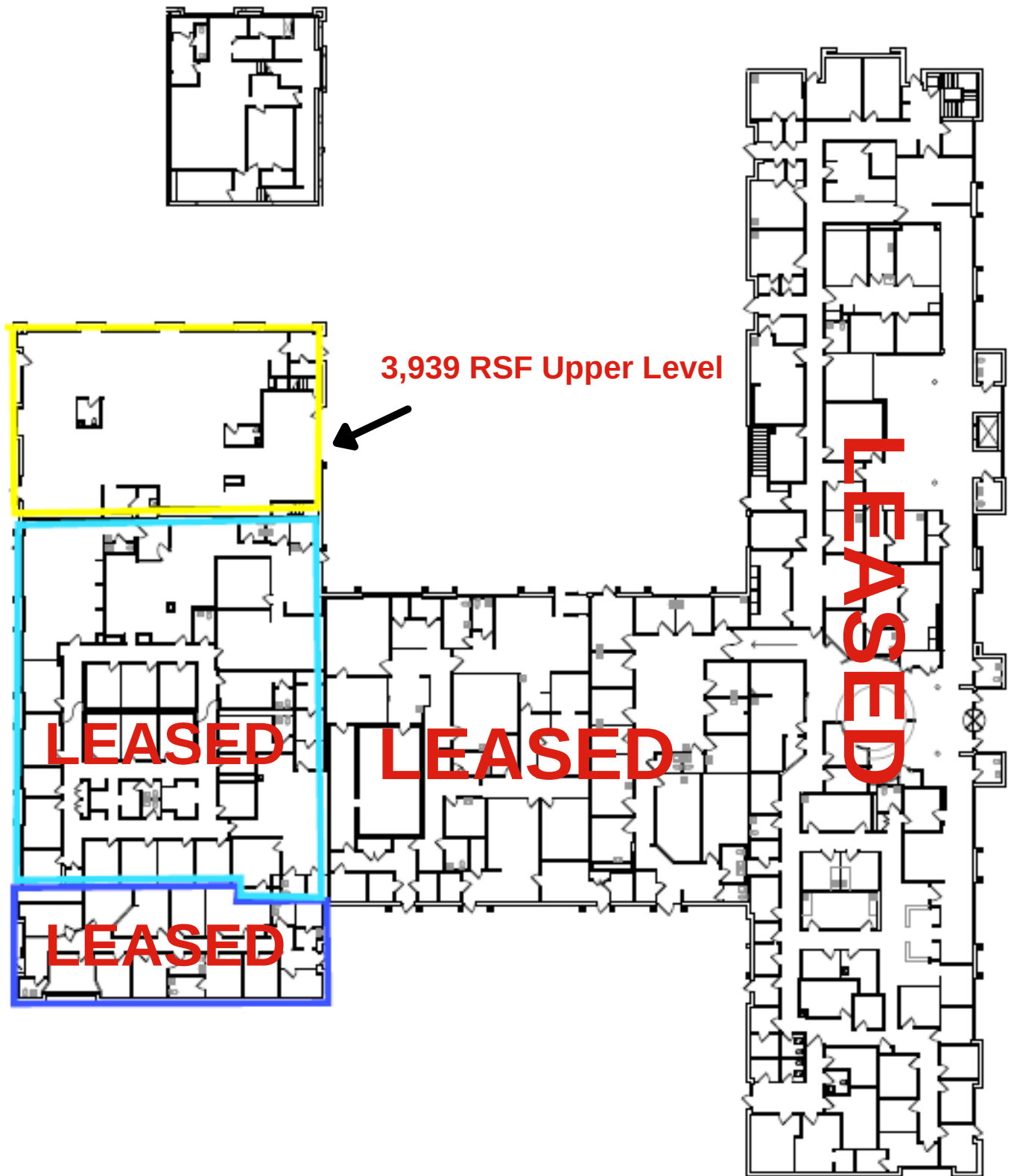






STONERIDGE MEDICAL & OFFICE CENTER

AVAILABLE SPACE



3,939 RSF Upper Level

LEASED

LEASED

LEASED

LEASED



Brad Kitchen, SIOR
614.545.2155
bkitchen@AlterraRE.com

Alterra Real Estate
614.365.9000
www.AltterraRE.com