

8000 Ravines Edge Ct  
Columbus, OH 43235

For Lease



## GORGEOUS SETTING MULTI TENANT PROFESSIONAL OFFICE

Lease Rates:

\$13.95 PSF Net

\$19.95 PSF Net - dental space

Est 2022 Operating Exps \$8.75 PSF

Available Space:

First Floor:

~~Suite 100:~~ 4,353 SF

~~Suite 211:~~ 725 SF

~~Suite 203:~~ 1,650 SF

Total SF: 6,728 SF

Second Floor:

Suite 250 : 4,427 SF  
(Dental Space)

- Open, attractive, contemporary common areas
- Prime main floor space directly off 2 story lobby
- Partially built out dental space on main floor
- 24/7 key card access, passenger elevator
- Property surrounded by gorgeous wooded setting with walk/bike trail
- Plentiful parking 4/1,000 SF
- Less than 1 mile to I-270/SR 23 interchange



Wes Bishop  
614.545.2161

wbishop@AlterraRE.com

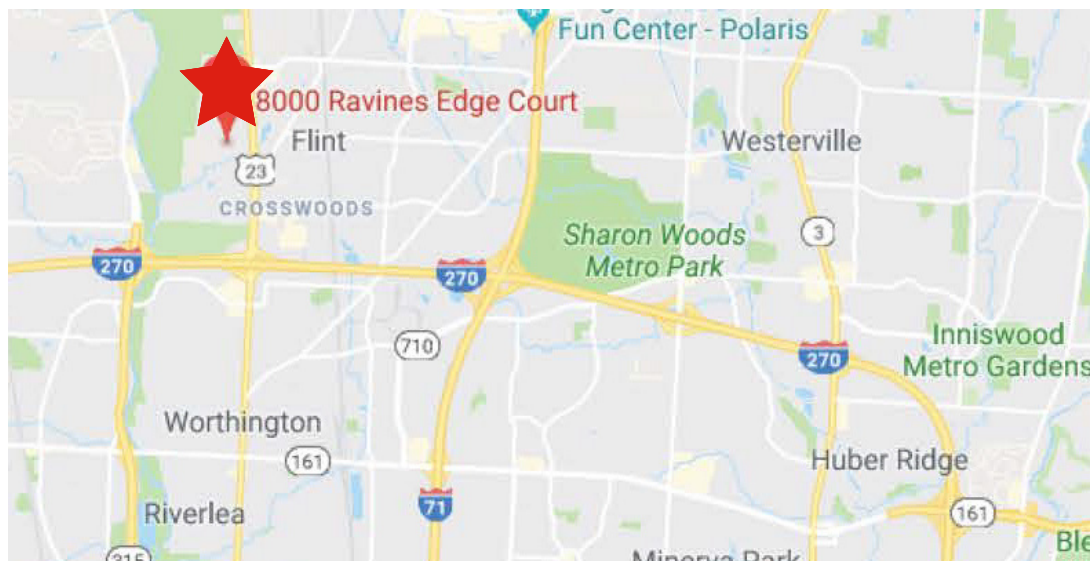
Bradford L. Kitchen  
614.545.2155

bkitchen@AlterraRE.com

Alterra Real Estate  
614.365.9000  
www.AltterraRE.com

8000 Ravines Edge Ct  
Columbus, OH 43235

For Lease



Wes Bishop  
614.545.2161  
wbishop@AlterraRE.com

Bradford L. Kitchen  
614.545.2155  
bkitchen@AlterraRE.com

Alterra Real Estate  
614.365.9000  
www.AltterraRE.com

8000 Ravines Edge Ct  
Columbus, OH 43235

For Lease



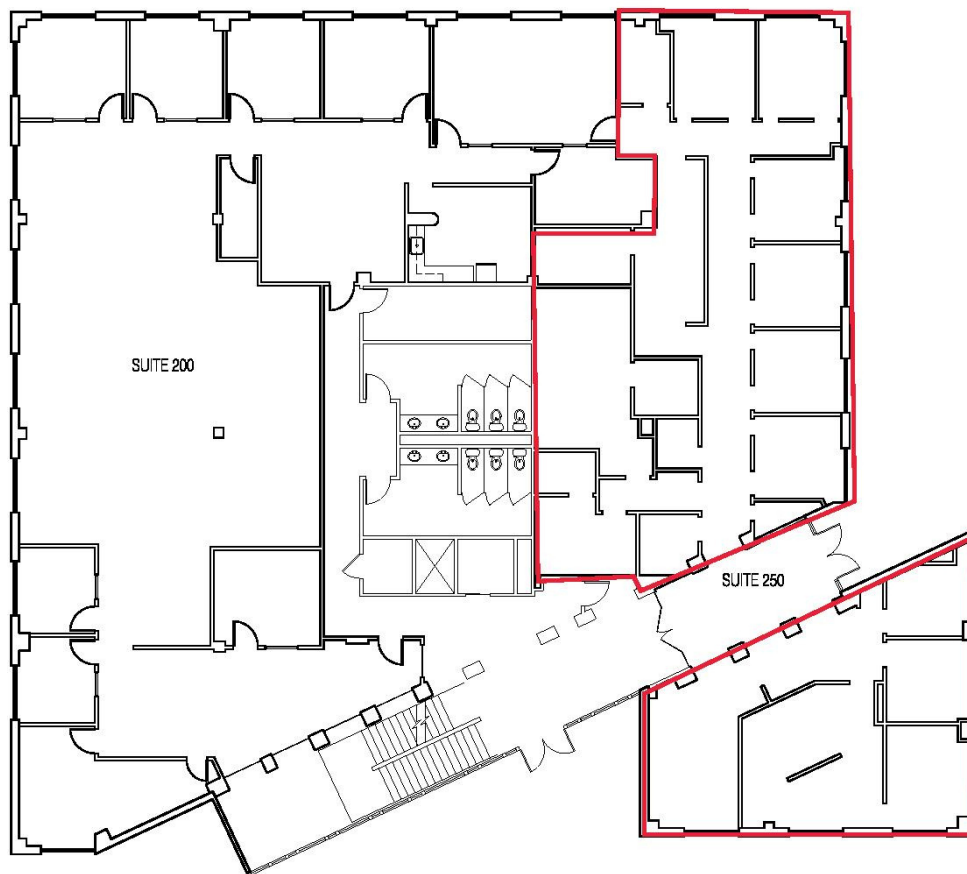
Wes Bishop  
614.545.2161  
wbishop@AlterraRE.com

Bradford L. Kitchen  
614.545.2155  
bkitchen@AlterraRE.com

Alterra Real Estate  
614.365.9000  
www.AltterraRE.com

8000 Ravines Edge Ct  
Columbus, OH 43235

For Lease



floor plan

second floor

1/16"=1'-0"

Existing Building Drawings For  
**8000 Ravines Edge Court**  
Suite 200 & 250  
Columbus, OH

**CARNEY • RANKER**  
ARCHITECTS LTD  
5525 Winwood Plaza, Suite E Dublin, OH 43019  
Ph: 614-792-0000 Fax: 614-792-1001  
info@carneyranker.com



**A2.0**  
19-361

Wes Bishop  
614.545.2161  
wbishop@AlterraRE.com

Bradford L. Kitchen  
614.545.2155  
bkitchen@AlterraRE.com

Alterra Real Estate  
614.365.9000  
www.AltterraRE.com