

261 W Johnstown Road
Gahanna, OH 43230

For Lease



INDIVIDUAL OFFICE OR OFFICE SUITES AVAILABLE

Available spaces for lease (rent per month):

Second Floor: Suite 208 \$550

- Updated colonial style brick office building with ample parking and signage
- Amenities include a shared conference room, kitchenette, break area with flat screen TV, storage and a shared copier
- Minutes from Port Columbus Airport, Easton Town Center and access to I-270



All of the above information has been compiled from sources deemed to be reliable, but no representation is made as to the accuracy thereof and it is submitted subject to errors and admissions. Buyer is responsible for verifying the information contained herein. This submission is also subject to changes in price, rental or other conditions, prior sale, lease or financing or withdrawal without notice.



Jackson Pulliam
614.285.7234
jpulliam@AlterraRE.com

Alterra Real Estate
614.365.9000
www.AltterraRE.com

261 W Johnstown Road
Gahanna, OH 43230

For Lease



Jackson Pulliam
614.285.7234
jpulliam@AlterraRE.com

Alterra Real Estate
614.365.9000
www.AltterraRE.com

261 W Johnstown Road
Gahanna, OH 43230

For Lease



Jackson Pulliam
614.285.7234
jpulliam@AlterraRE.com

Alterra Real Estate
614.365.9000
www.AltterraRE.com

261 W Johnstown Road
Gahanna, OH 43230

For Lease
SUITE 102 FURNISHED



Jackson Pulliam
614.285.7234
jpulliam@AlterraRE.com

Alterra Real Estate
614.365.9000
www.AltterraRE.com

261 W Johnstown Road Gahanna, OH 43230

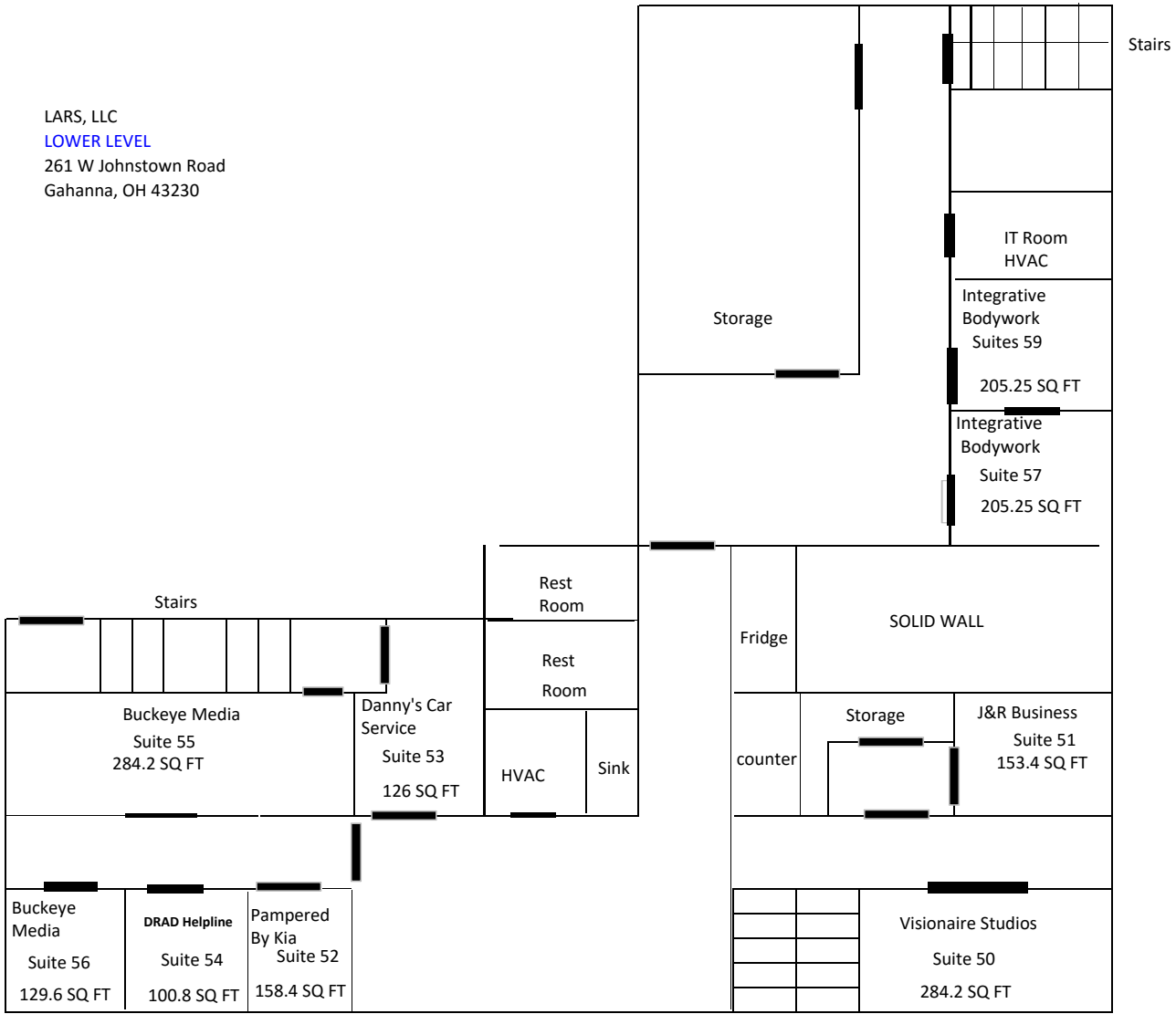
For Lease



Jackson Pulliam
614.285.7234
jpulliam@AlterraRE.com

Alterra Real Estate
614.365.9000
www.AltterraRE.com

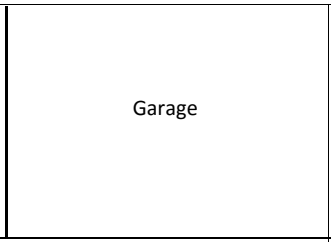
LARS, LLC
 LOWER LEVEL
 261 W Johnstown Road
 Gahanna, OH 43230



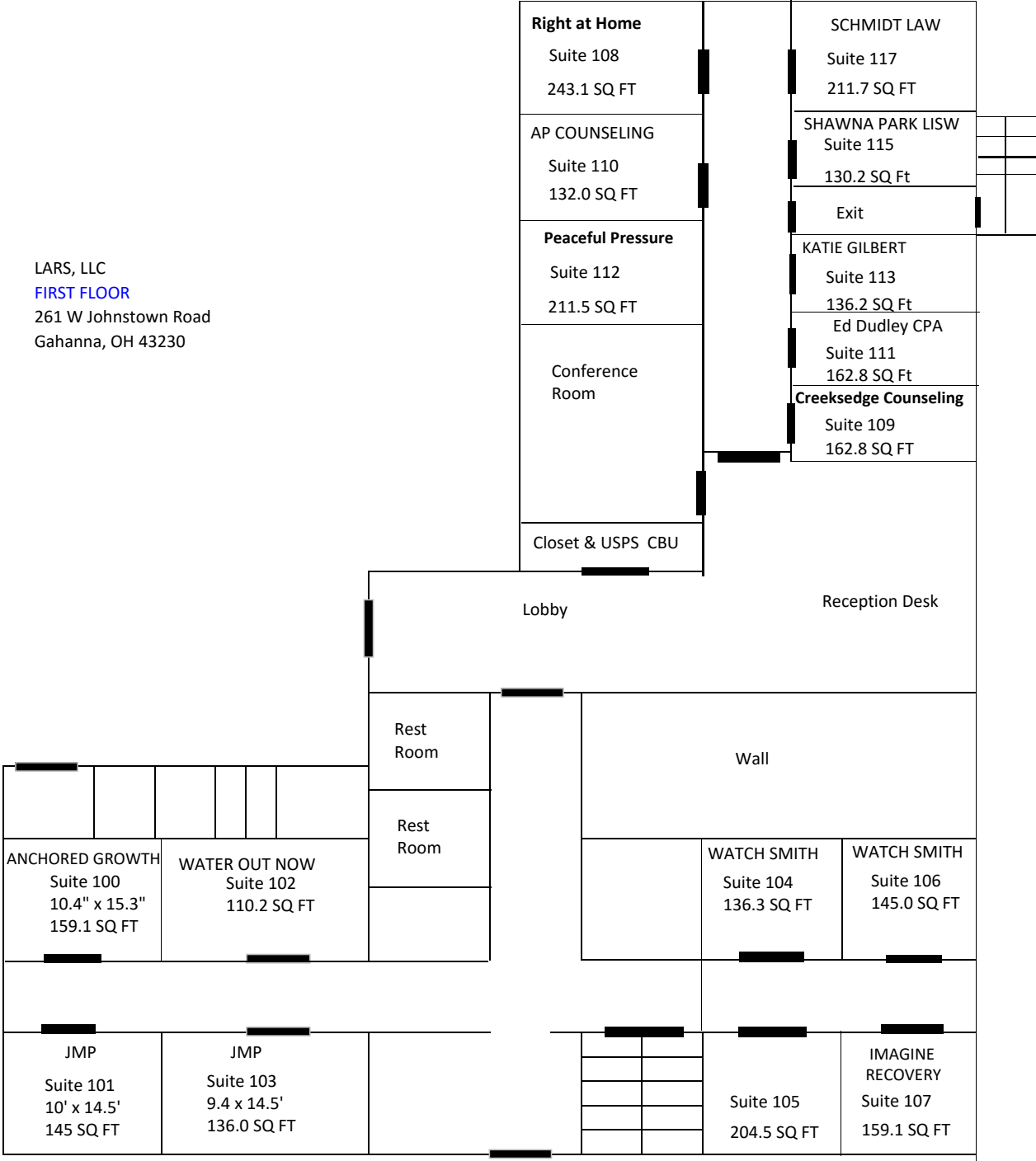
Notes

Special Notes

No Suites Available.



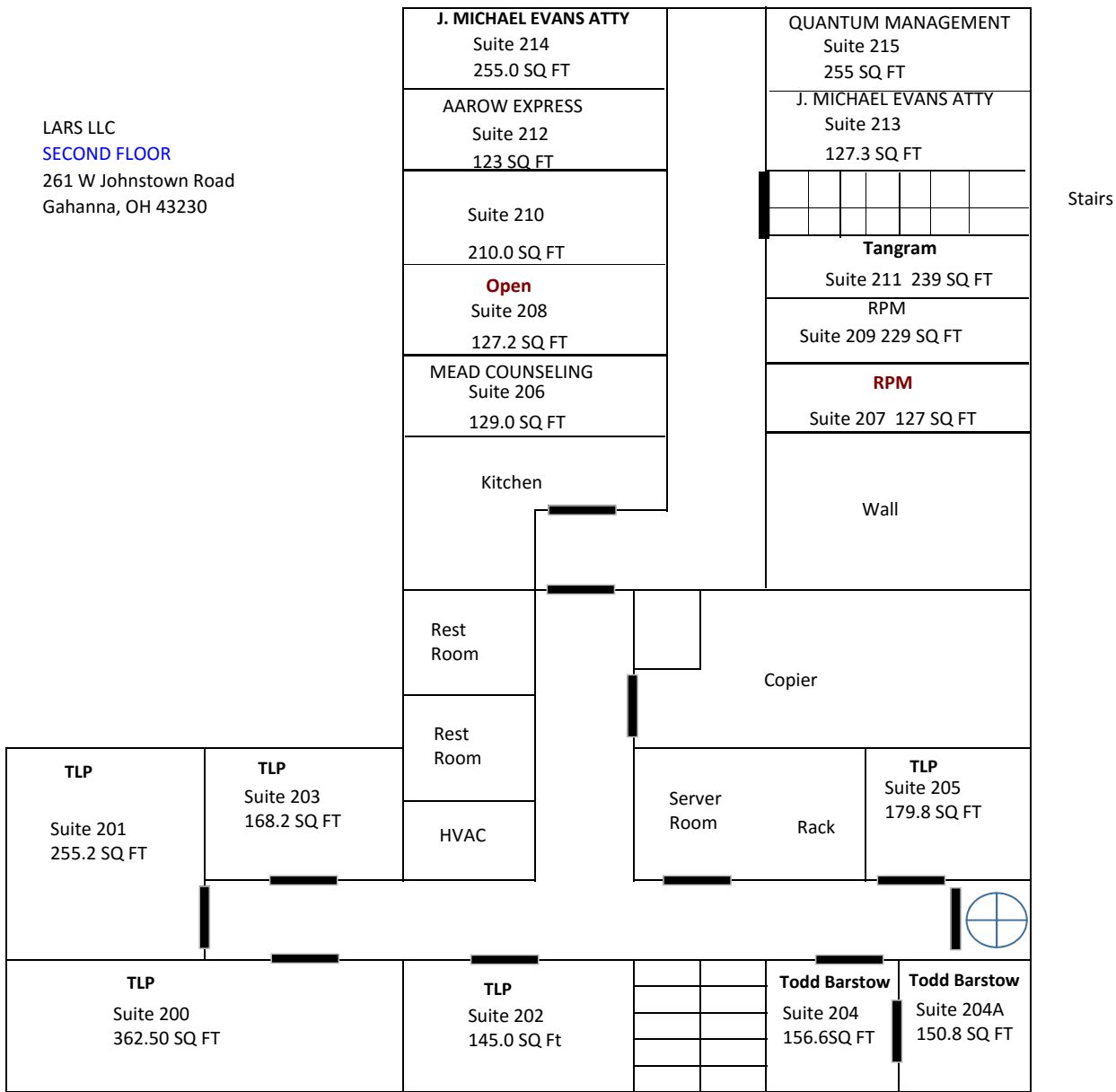
LARS, LLC
FIRST FLOOR
 261 W Johnstown Road
 Gahanna, OH 43230



Notes

1) No Suites Available on 1st Floor.

LARS LLC
SECOND FLOOR
 261 W Johnstown Road
 Gahanna, OH 43230



Notes

- 1) Suite 208 is available on the 2nd Floor