

5300 - 5340 E Main Street
Columbus, OH 43214

For Lease



OFFICE & MEDICAL SUITES AND INDIVIDUAL OFFICES IMMEDIATELY AVAILABLE

Available Space for Lease:
225 SF to 7,740 SF

Lease Rates:

1st Floor: \$16.95 PSF Gross

2nd & 3rd Floor: \$14.95 PSF Gross

Medical Suites: \$16.95 PSF Gross

- 5 building, professionally managed complex with ample parking
- Shared conference room available to tenants (holds up to 50 people)
- Flexible floor plans
- Monument signage on E Main St available
- Storage available within property
- 1/2 mile to I-270 freeway ramps
- Surrounding area contains an abundance of shops, services and dining options

All of the above information has been compiled from sources deemed to be reliable, but no representation is made as to the accuracy thereof and it is submitted subject to errors and admissions. Buyer is responsible for verifying the information contained herein. This submission is also subject to changes in price, rental or other conditions, prior sale, lease or financing or withdrawal without notice.

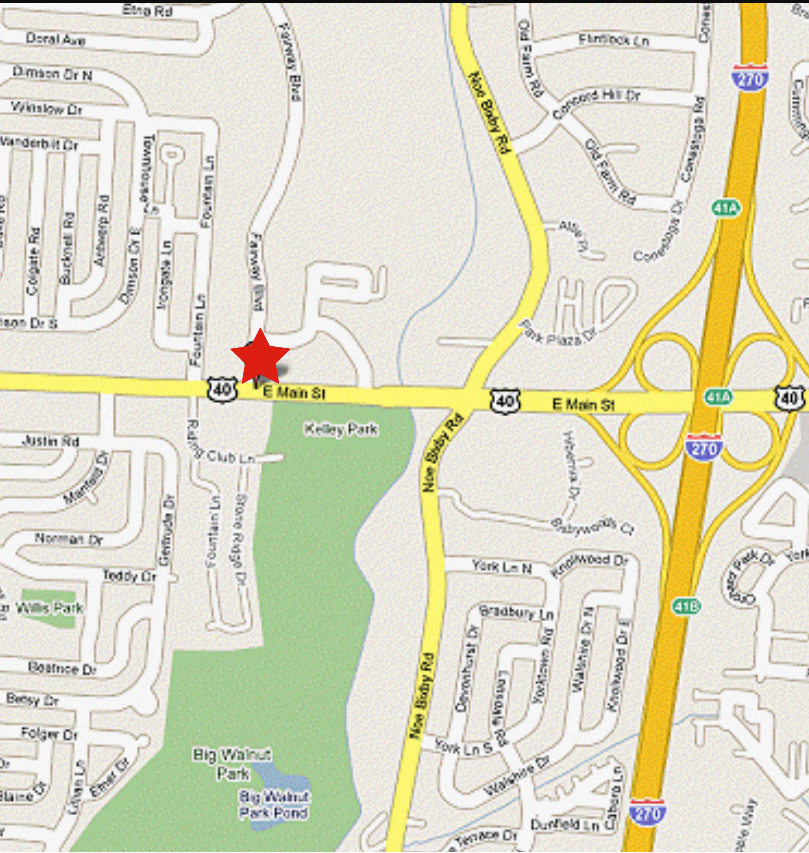


Jackson Pulliam
614.285.7234
jpulliam@AlterraRE.com

Alterra Real Estate
614.365.9000
www.AltterraRE.com

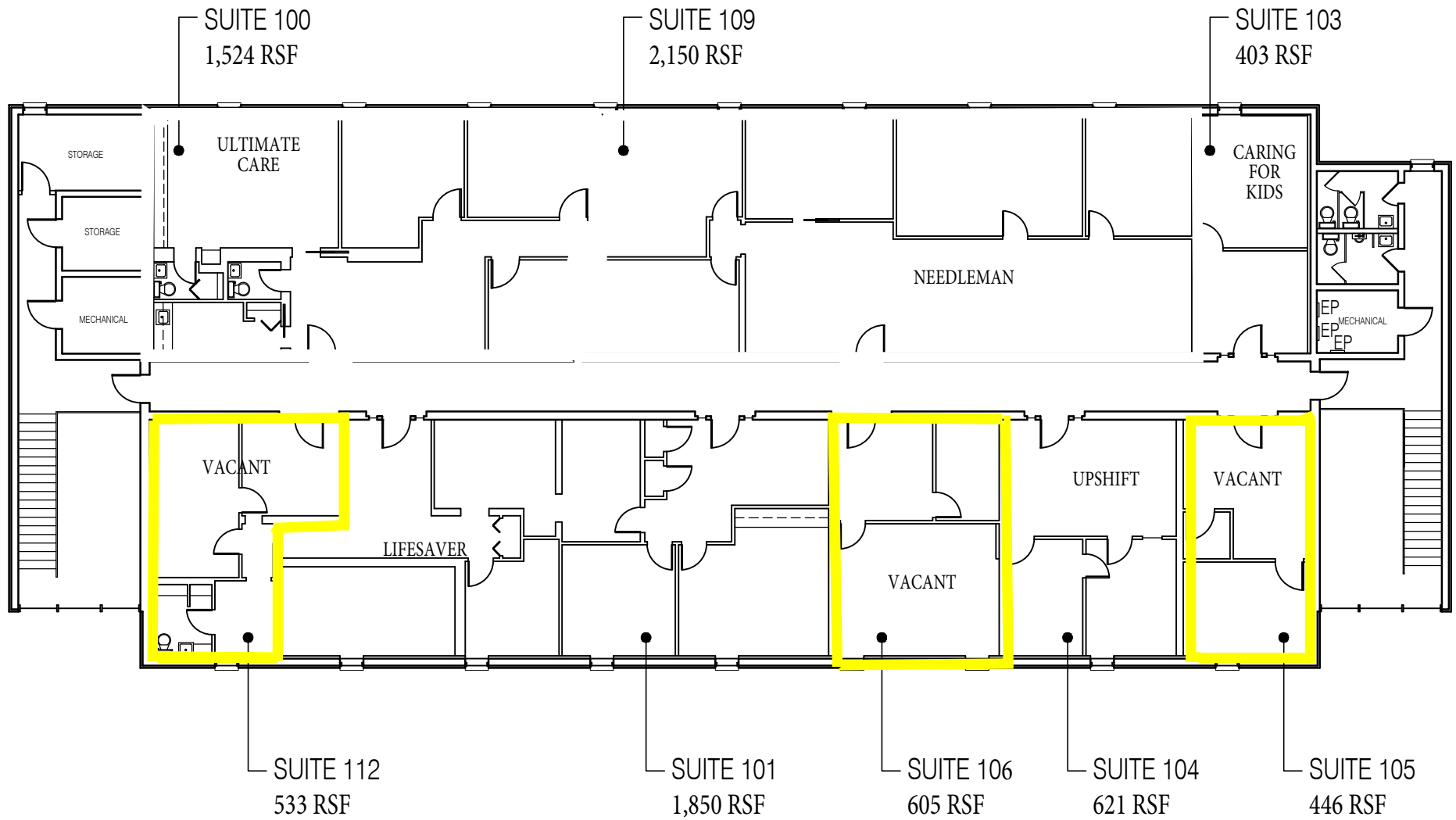
5300 - 5340 E Main Street
Columbus, OH 43214

For Lease



Jackson Pulliam
614.285.7234
jpulliam@AlterraRE.com

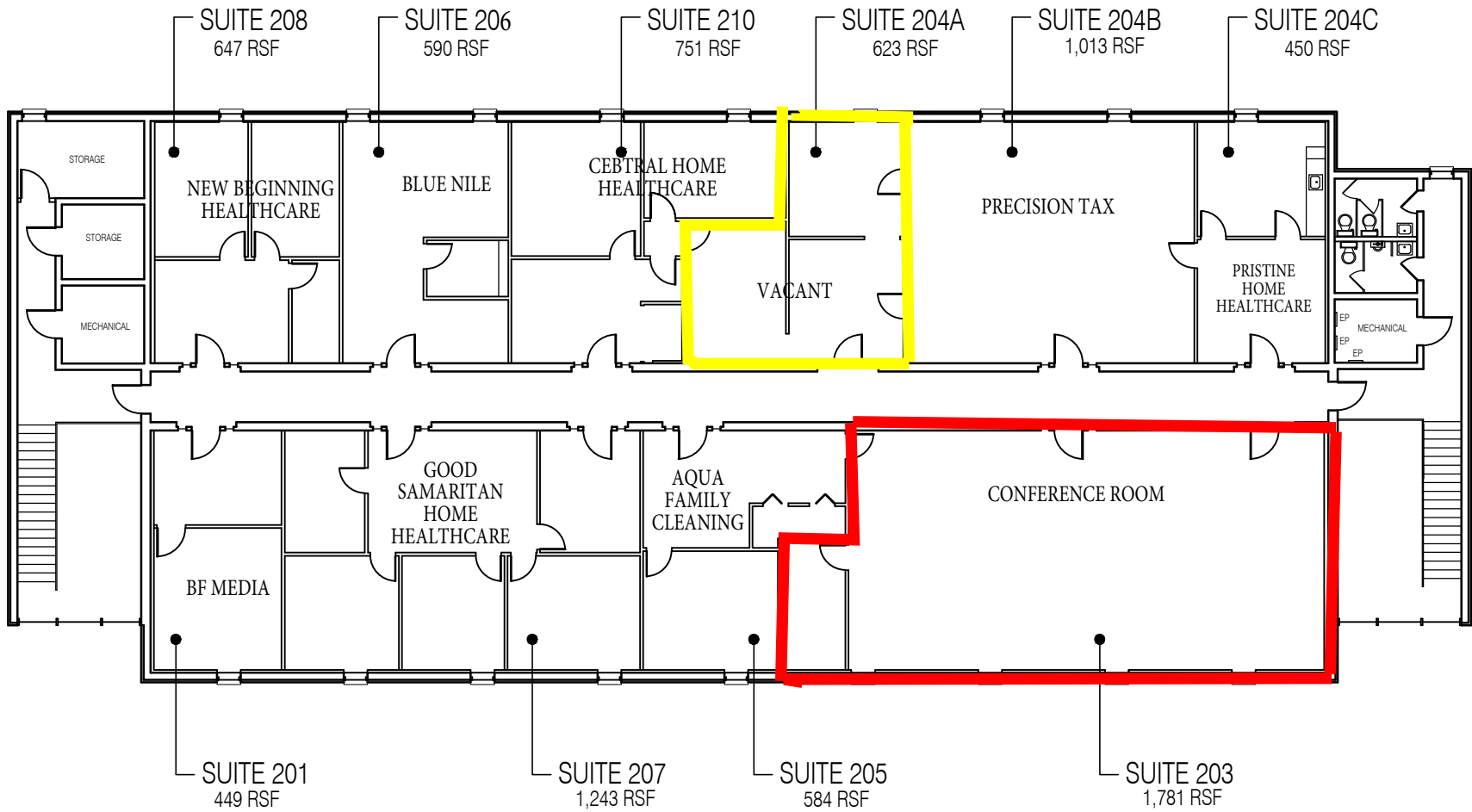
Alterra Real Estate
614.365.9000
www.AltterraRE.com



First Floor Plan

5300 E. Main St.

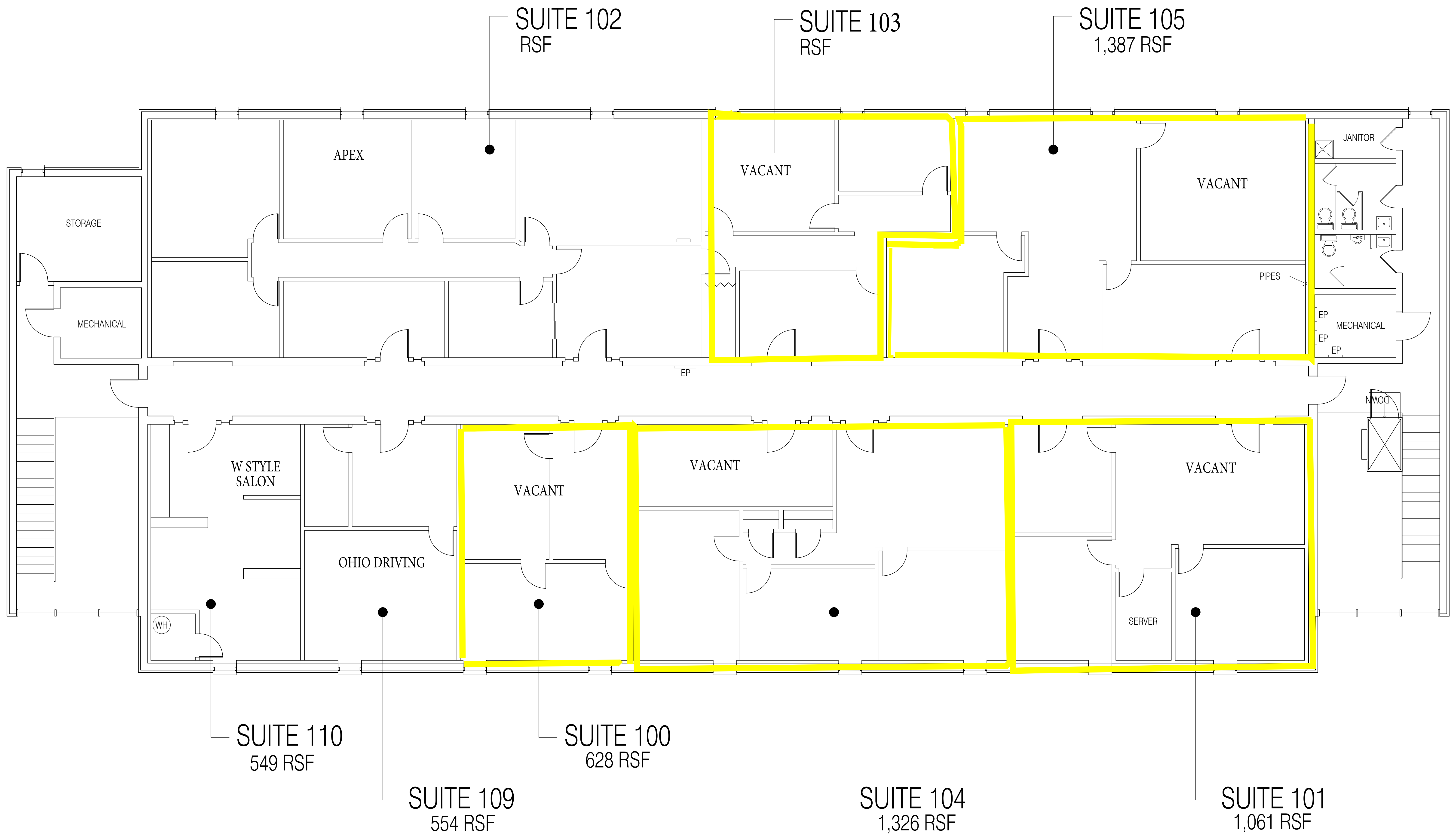
1/16"=1'-0"



Second Floor Plan

5300 E. Main St.

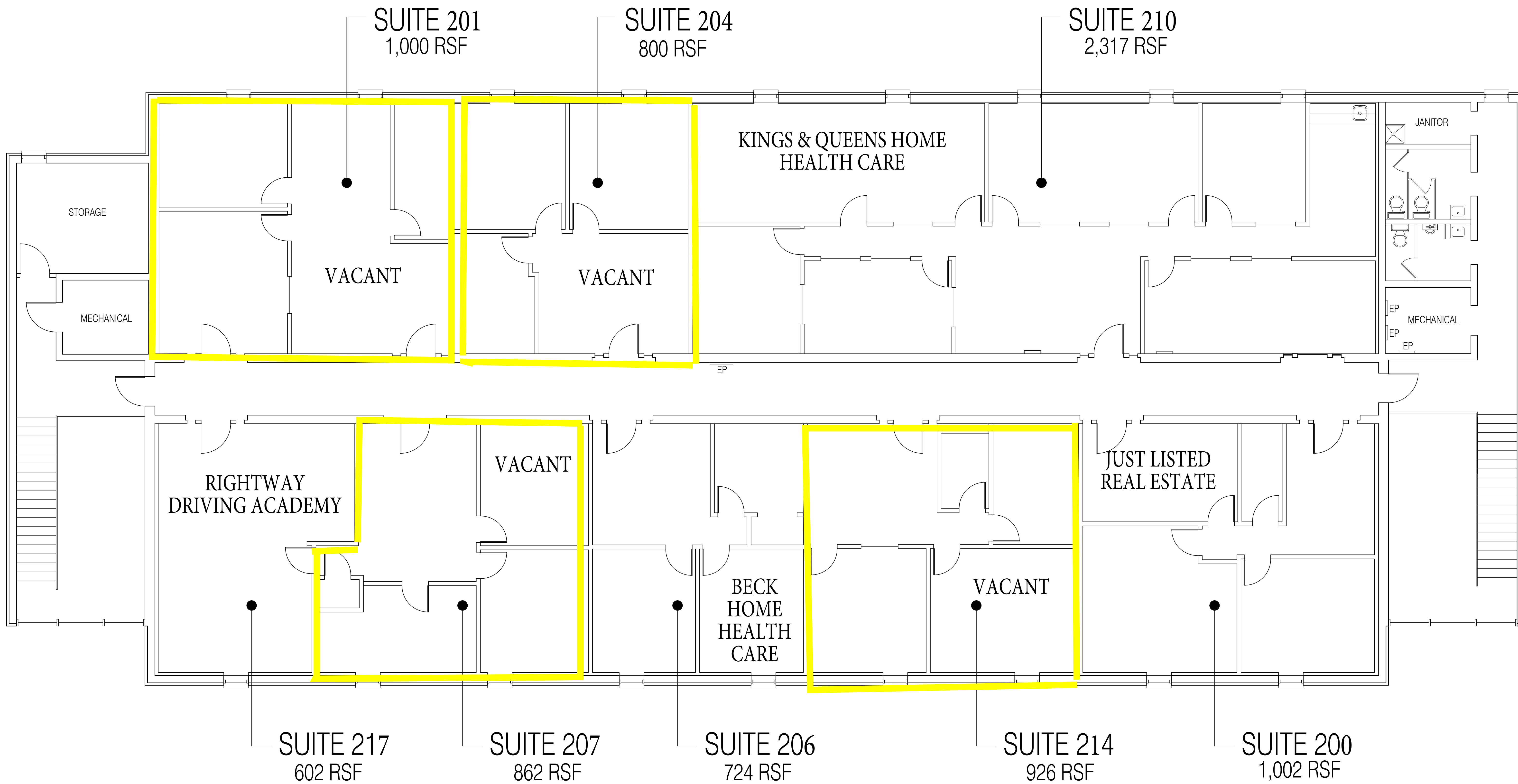
1/16" = 1'-0"



First Floor

5310 E. Main St.

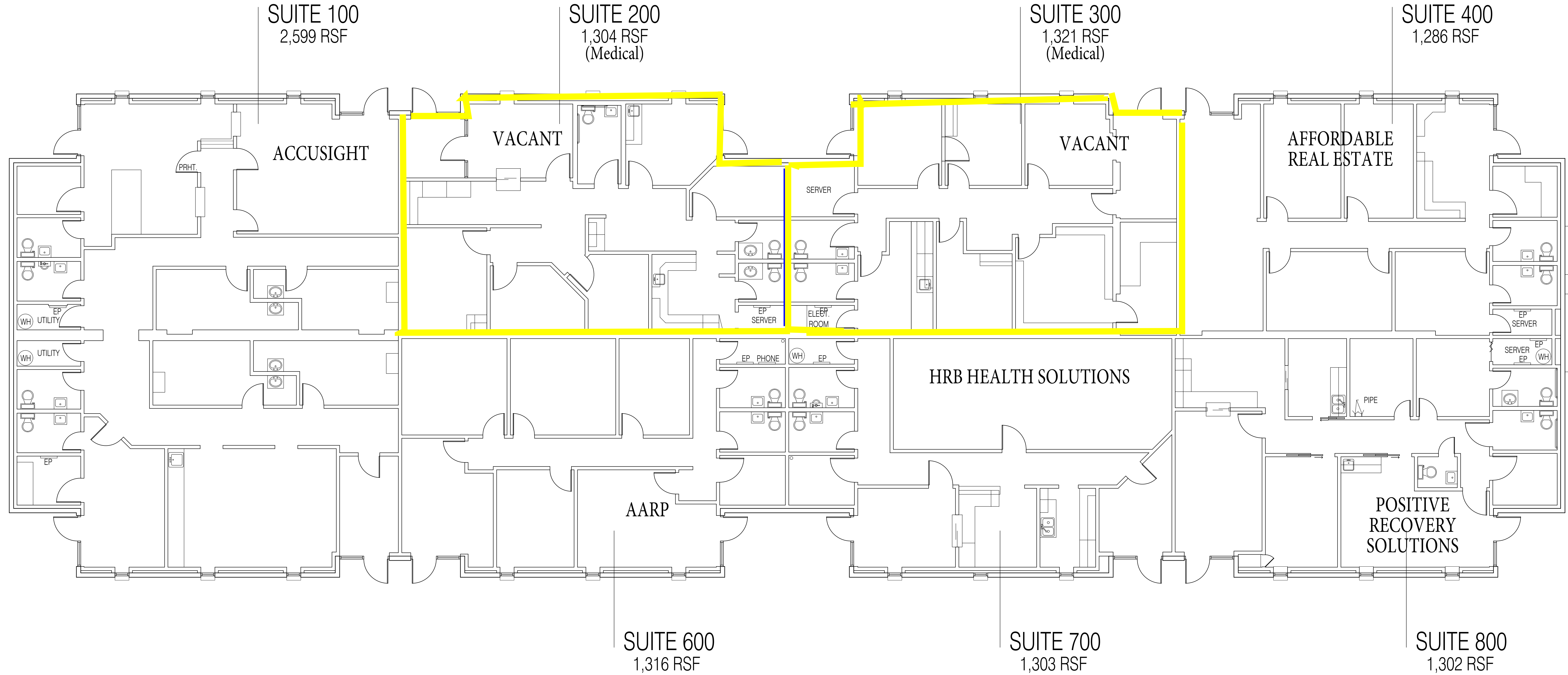
N.T.S



Second Floor Plan

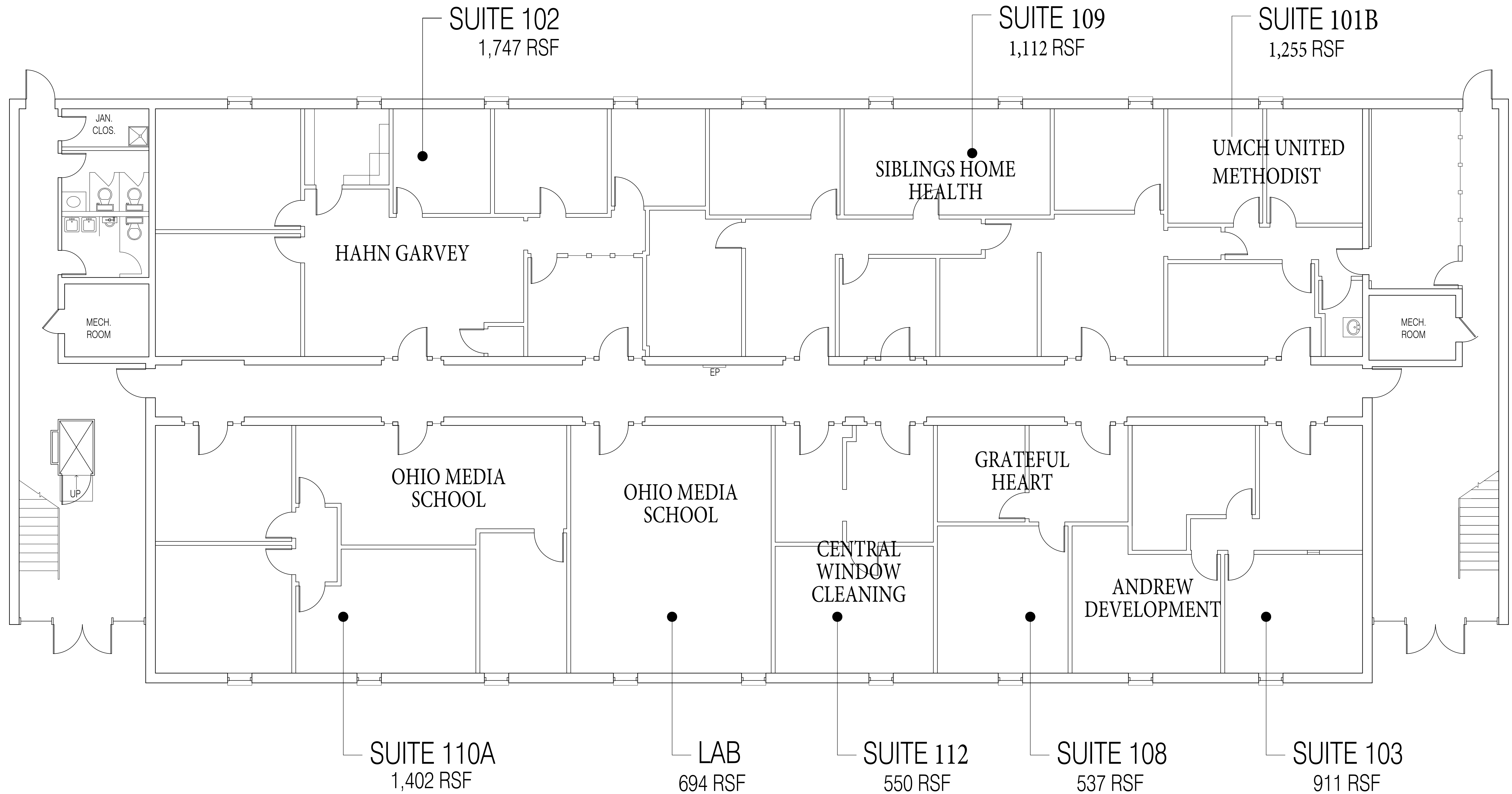
5310 E. Main St.

THIS SIDE FACES PARKING LOT



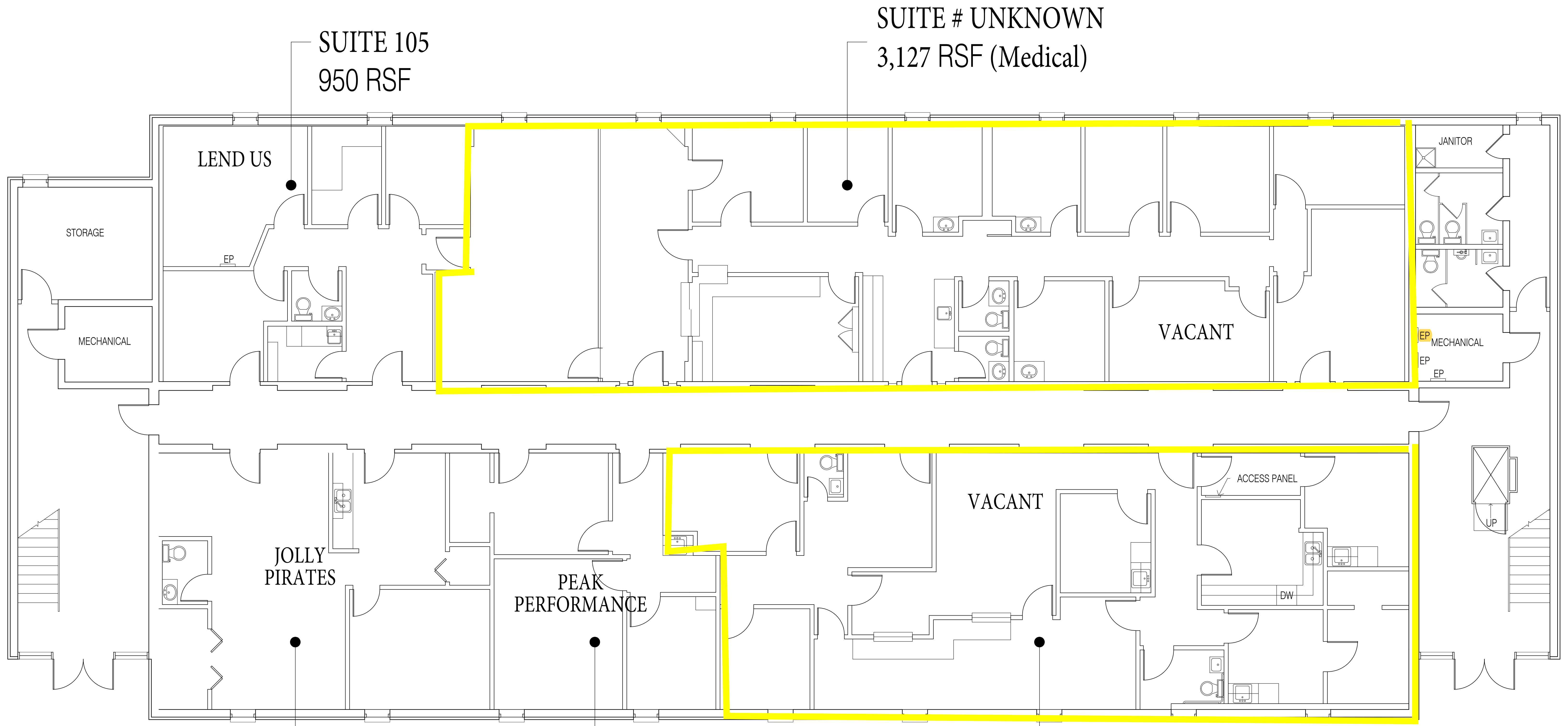
Floor Plan

5320 E. Main St.



First Floor Plan

5330 E. Main St.



SUITE 105
950 RSF

SUITE # UNKNOWN
3,127 RSF (Medical)

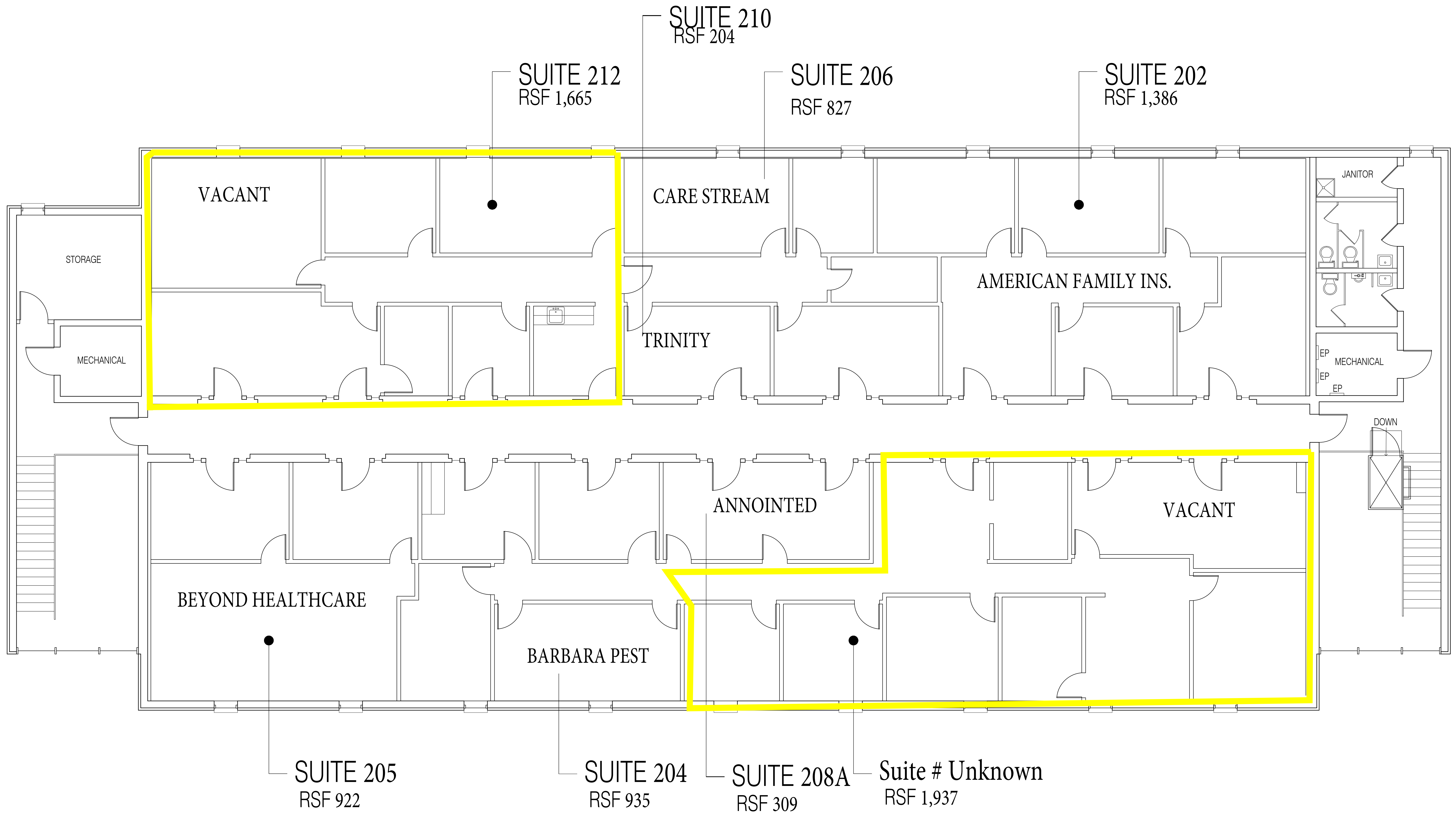
SUITE 103
1,045 RSF

SUITE 104
738 RSF

SUITE #UNKNOWN
2,318 RSF
(Medical)

First Floor Plan

5340 E. Main St.



Second Floor Plan

5340 E. Main St.