

4643-4645 Leap Court
Hilliard, OH 43026

For Sale



OWNER / USER MEDICAL or GENERAL OFFICE PROPERTY

Medical - office use condo - 1,920 SF
4643-4645 Leap Court (2 units combined)

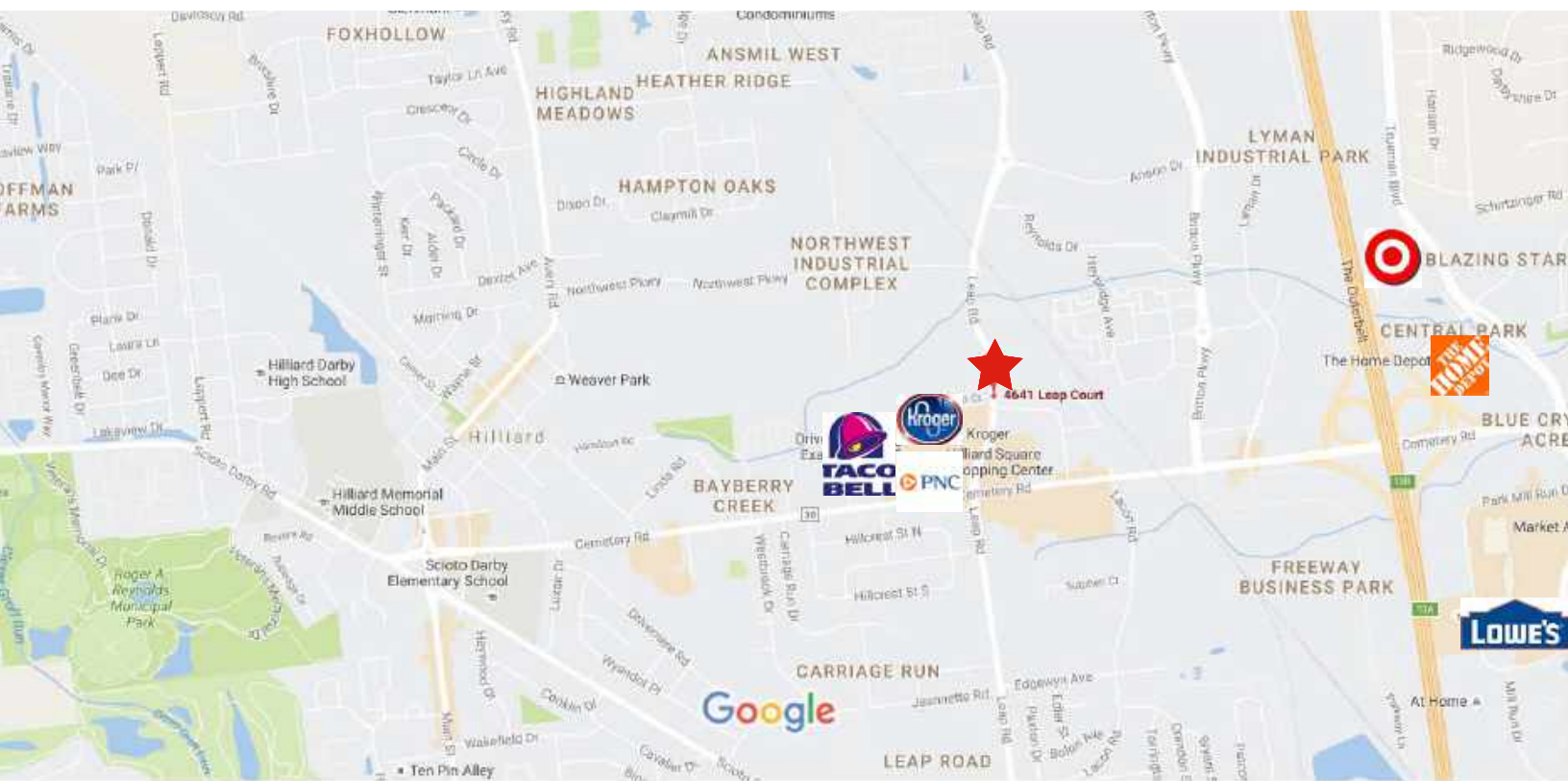
Sales Price: \$250,000

- Attractive brick office/ medical condo with great access to I-270
- Centrally located in Hilliard, Ohio within well maintained, professionally managed office park
- Flexible floor plan; space can be demised to meet user needs
- Ample parking at suite door for clients and staff



Brad L. Kitchen, SIOR
614.545.2155
bkitchen@AlterraRE.com

Alterra Real Estate
614.365.9000
www.AltterraRE.com



Brad L. Kitchen, SIOR
614.545.2155
bkitchen@AlterraRE.com

Alterra Real Estate
614.365.9000
www.AlterraRE.com

HILLIARD SQUARE OFFICE CONDOMINIUM, PHASE TWO

COND. PLAT BOOK 41 PAGE 5

NORTHWEST INDUSTRIAL COMPLEX SECTION 1 P. 45, PG. 44

N 81°44'43" E 598.91'

4:10 P.
RECORDED PUBLIC CO. 200

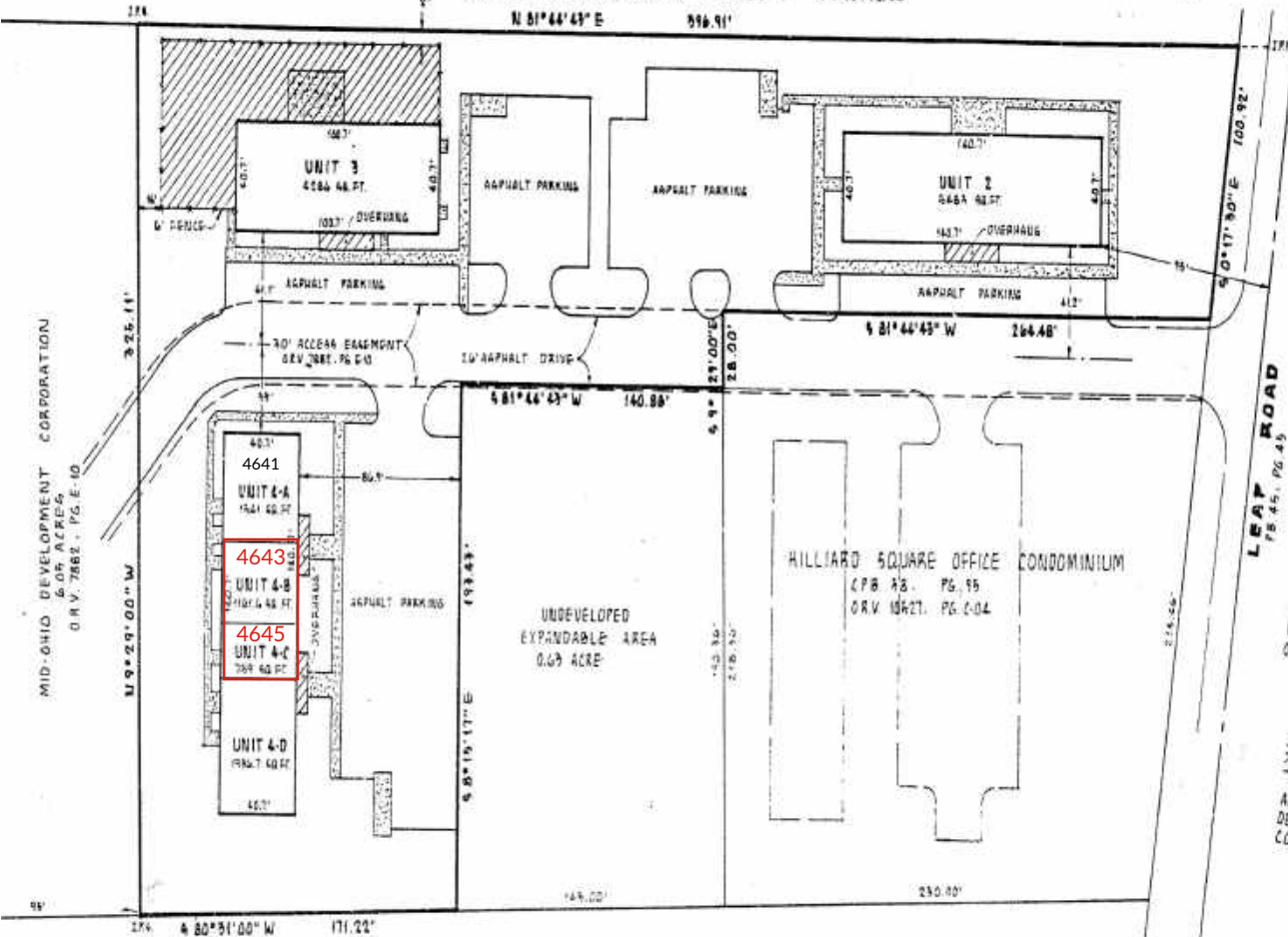


APR 29 1988

RECORDS FILE # 974.68

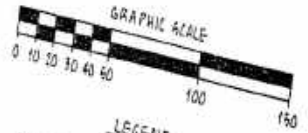
1255#
40422

FOR REFERENCE PLEASE SEE
O.R. VOL 11510 PAGE E15



LEAF ROAD
S 0°17'30" E 100.92'

NORTH
1" = 40'



LEGEND

CONCRETE WALKS
LIMITED COMMON AREA
ALL AREAS OUTSIDE OF THE BUILDINGS NOT
DESIGNATED AS LIMITED COMMON AREAS ARE
COMMON AREAS.

DEVELOPMENT CORPORATION
4 ACRES
168, PG. 3-16

THE KROGER CO
731 ACRES
D.R.V. 1864, PG. 2-18

HILLIARD SQUARE OFFICE CONDOMINIUM, PHASE TWO
CITY OF HILLIARD, FRANKLIN COUNTY, OHIO
2.33 ACRES
DB 2940, PG. 225 PARCEL 1

WE HEREBY CERTIFY THAT THIS PLAT ACCURATELY
SHOWS THE BUILDINGS, DRIVES AND WALKS AS CONSTRUCTED
AT "HILLIARD SQUARE OFFICE CONDOMINIUM, PHASE TWO"



HILLIARD SQUARE OFFICE CONDOMINIUM PHASE TWO		M-E BUILDING CONSULTANTS, INC. CIVIL ENGINEERING DIVISION 1015 EAST BROAD STREET COLUMBUS, OHIO 43205		REVISIONS	
DESIGNED R&W	DRAWN R&W	DATE 4-18-88	BY R&W	DESCRIPTION ADJOINERS	
MID-OHIO DEVELOPMENT CORPORATION		DATE 4-18-88			

Brad L. Kitchen, SIOR
614.545.2155
bkitchen@AlterraRE.com

Alterra Real Estate
614.365.9000
www.AlterraRE.com



4643-4645 Leap Ct
1,920SF

FLOOR PLAN

