

8000 Ravines Edge Ct
Columbus, OH 43235

For Lease



GORGEOUSLY LOCATED MULTI-TENANT PROFESSIONAL PROPERTY

Lease Rates:

\$10.95 psf Net

\$15.95 psf Net - dental space

Est 2020 Operating Exps \$8.95

Available Space:

Main Floor:

4,427 SF - partially built out dental

Suite 102 2,066 SF

- Open, attractive, contemporary common areas
- Prime main floor space directly off 2 story lobby
- Partially built out dental space on main floor
- 24/7 key card access, passenger elevator
- Property surrounded by gorgeous wooded setting with walk/bike trail
- Plentiful parking 4/1,000 SF
- Less than 1 mile to I-270/SR 23 interchange

All of the above information has been compiled from sources deemed to be reliable, but no representation is made as to the accuracy thereof and it is submitted subject to errors and admissions. Buyer is responsible for verifying the information contained herein. This submission is also subject to changes in price, rental or other conditions, prior sale, lease or financing or withdrawal without notice.



Wes Bishop

614.545.2161

wbishop@AlterraRE.com

Bradford L. Kitchen

614.545.2155

bkitchen@AlterraRE.com

Alterra Real Estate

614.365.9000

www.AltterraRE.com

8000 Ravines Edge Ct
Columbus, OH 43235

For Lease



Wes Bishop
614.545.2161
wbishop@AlterraRE.com

Bradford L. Kitchen
614.545.2155
bkitchen@AlterraRE.com

Alterra Real Estate
614.365.9000
www.AlterraRE.com

8000 Ravines Edge Ct
Columbus, OH 43235

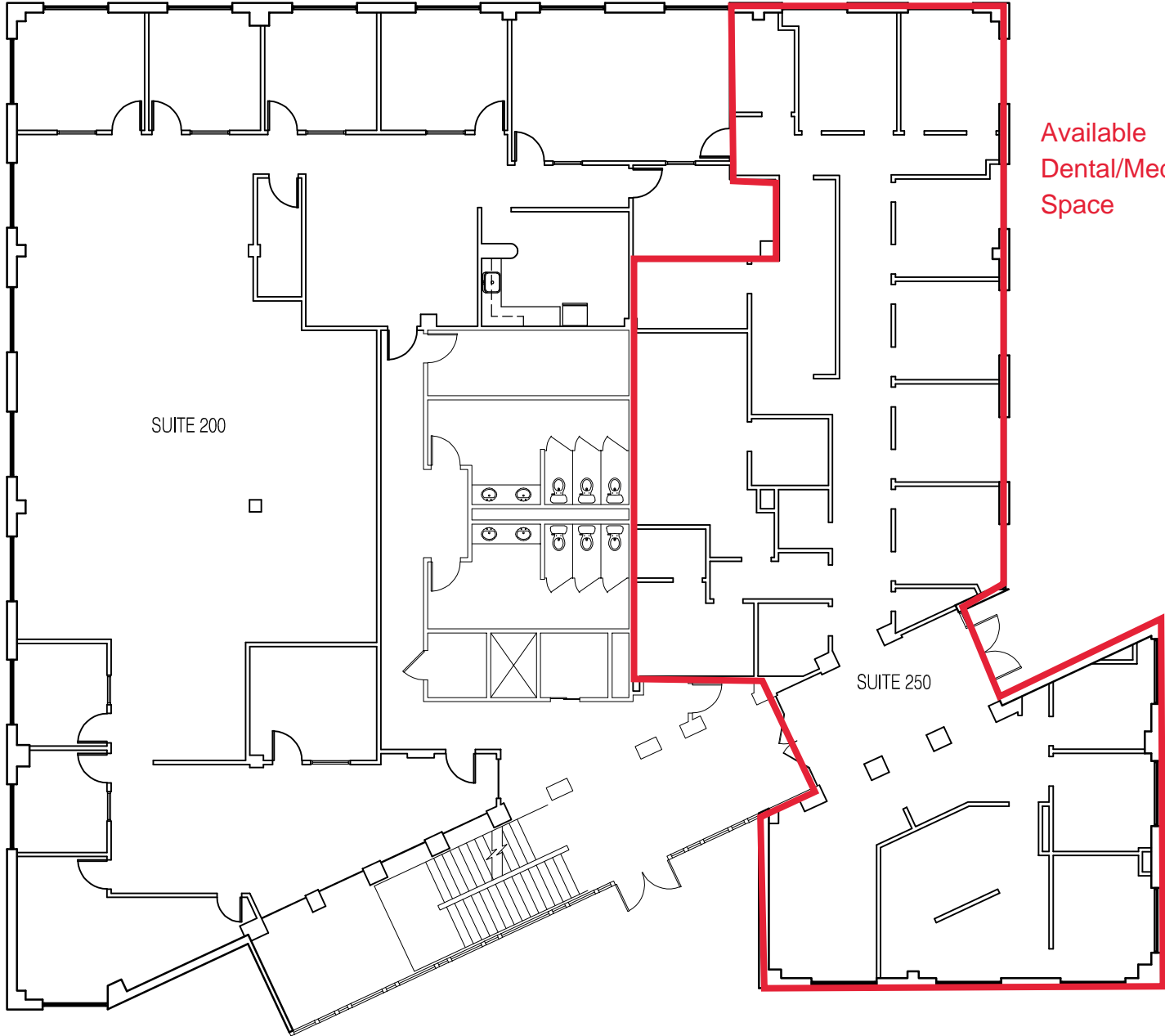
For Lease



Wes Bishop
614.545.2161
wbishop@AlterraRE.com

Bradford L. Kitchen
614.545.2155
bkitchen@AlterraRE.com

Alterra Real Estate
614.365.9000
www.AltterraRE.com



Available
Dental/Medical
Space

SUITE 200

SUITE 250



floor plan

second floor

1/16"=1'-0"

CARNEY•RANKER
ARCHITECTS LTD
5925 Wilcox Place, Suite E Dublin, OH 43016
Ph. 614-792-1000 Fax 614-792-1001
mail@carneyranker.com

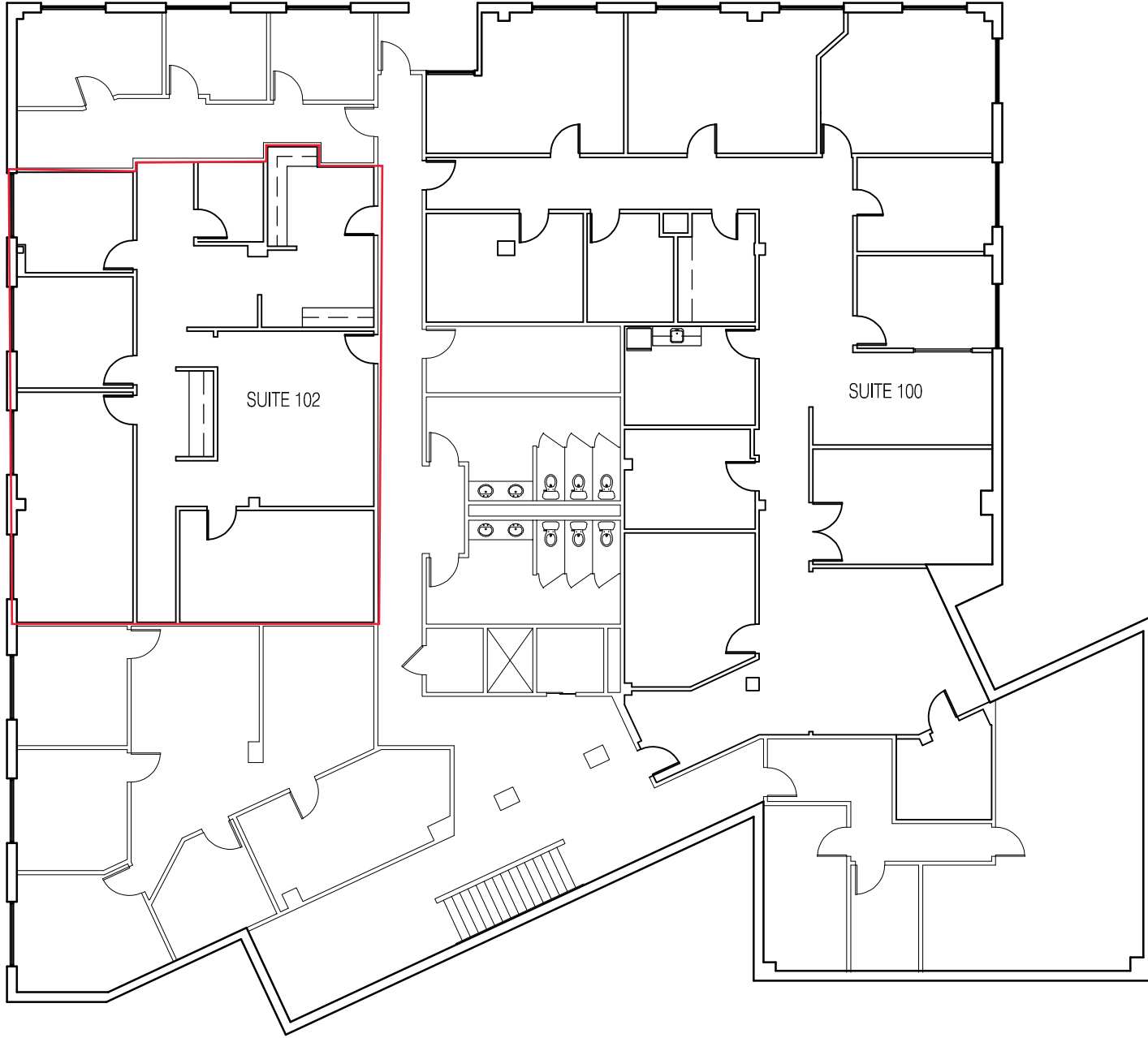


A2.0
19-361

Existing Building Drawings For
8000 Ravines Edge Court

Suite 200 & 250

Columbus, OH



floor plan

first floor

1/16"=1'-0"

CARNEY•RANKER
ARCHITECTS LTD
 5925 Wilcox Place, Suite E Dublin, OH 43016
 Ph. 614-792-1000 Fax 614-792-1001
 mail@carneyranker.com



A1.0
 19-361

Existing Building Drawings For
8000 Ravines Edge Court

Suite 100 & 102

Columbus, OH