

5150 E Dublin Granville Rd  
Westerville, OH 43081

For Lease



## Professional office suites suited to your business

Lease Rate:

\$12.95 PSF Net

Available Space:

13,255 SF on 1st Floor

4,000 SF on 2nd Floor

1st floor space can be subdivided

- Located at corner of N Hamilton Rd and newly constructed E Dublin Granville Road with quick access to SR 161
- 2 access points to property; 1 at traffic signal
- Key card access and elevators
- Ample surface parking at 4.2/1,000 SF
- Growing business area just east of New Albany
- Close to restaurants, retail and services



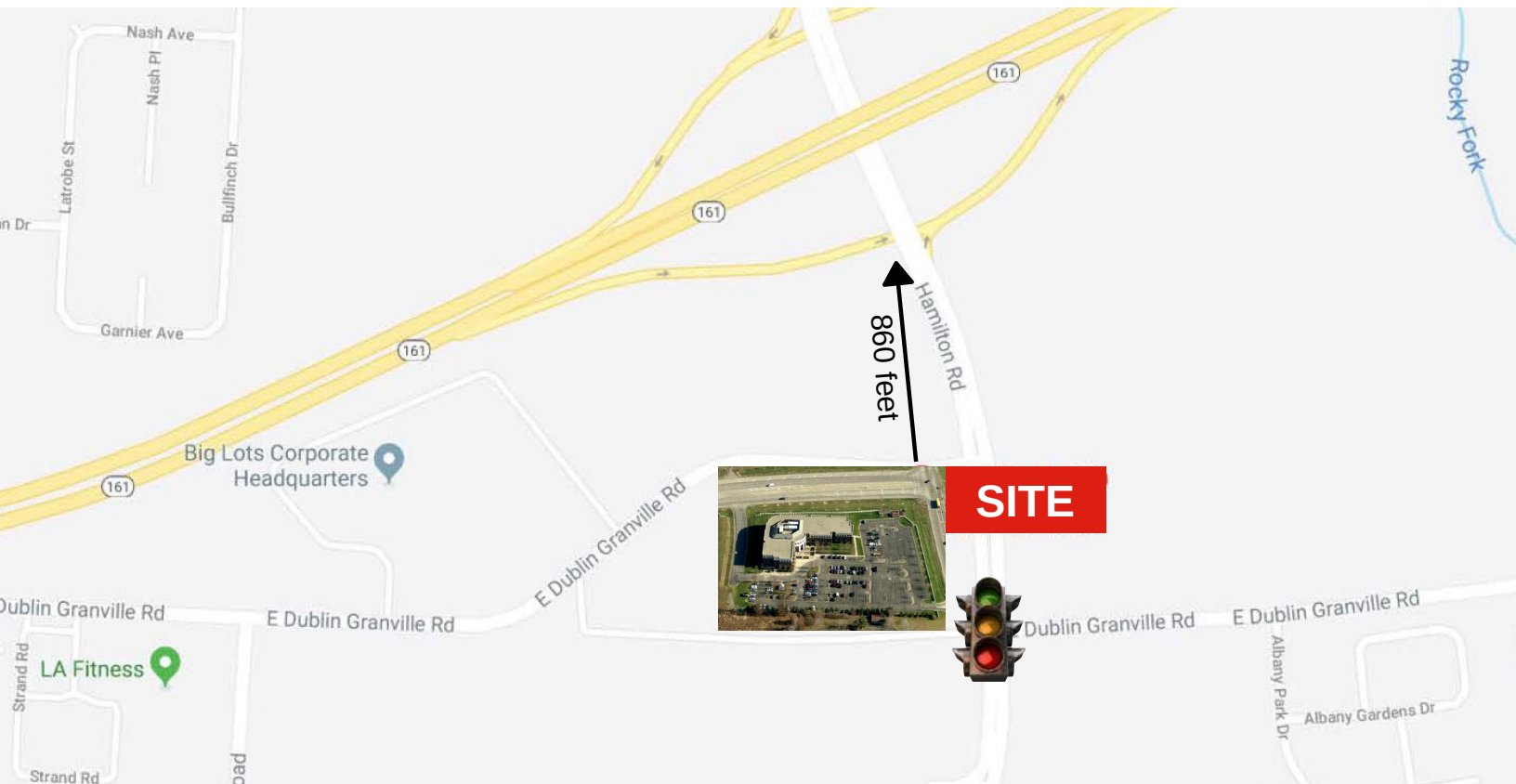
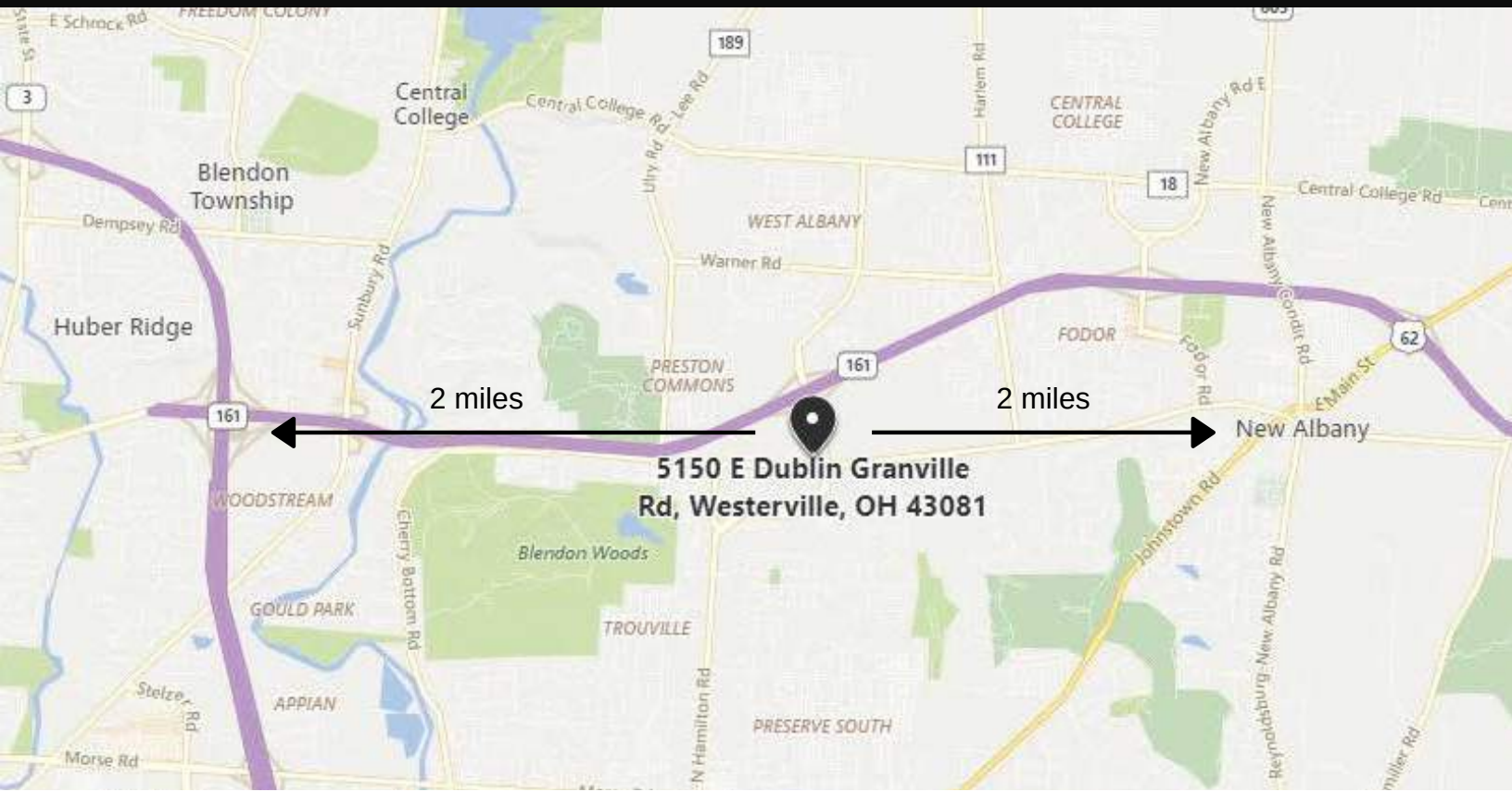
Brad L. Kitchen, SIOR  
614.545.2155  
bkitchen@AlterraRE.com

Jeff R. Rudicil (JR)  
614.545.2157  
jr@AlterraRE.com

Alterra Real Estate  
614.365.9000  
www.AltterraRE.com

5150 E Dublin Granville Rd  
Westerville, OH 43081

For Lease



Brad L. Kitchen, SIOR  
614.545.2155  
bkitchen@AlterraRE.com

Jeff R. Rudicil (JR)  
614.545.2157  
jr@AlterraRE.com

Alterra Real Estate  
614.365.9000  
www.AltterraRE.com

5150 E Dublin Granville Rd  
Westerville, OH 43081

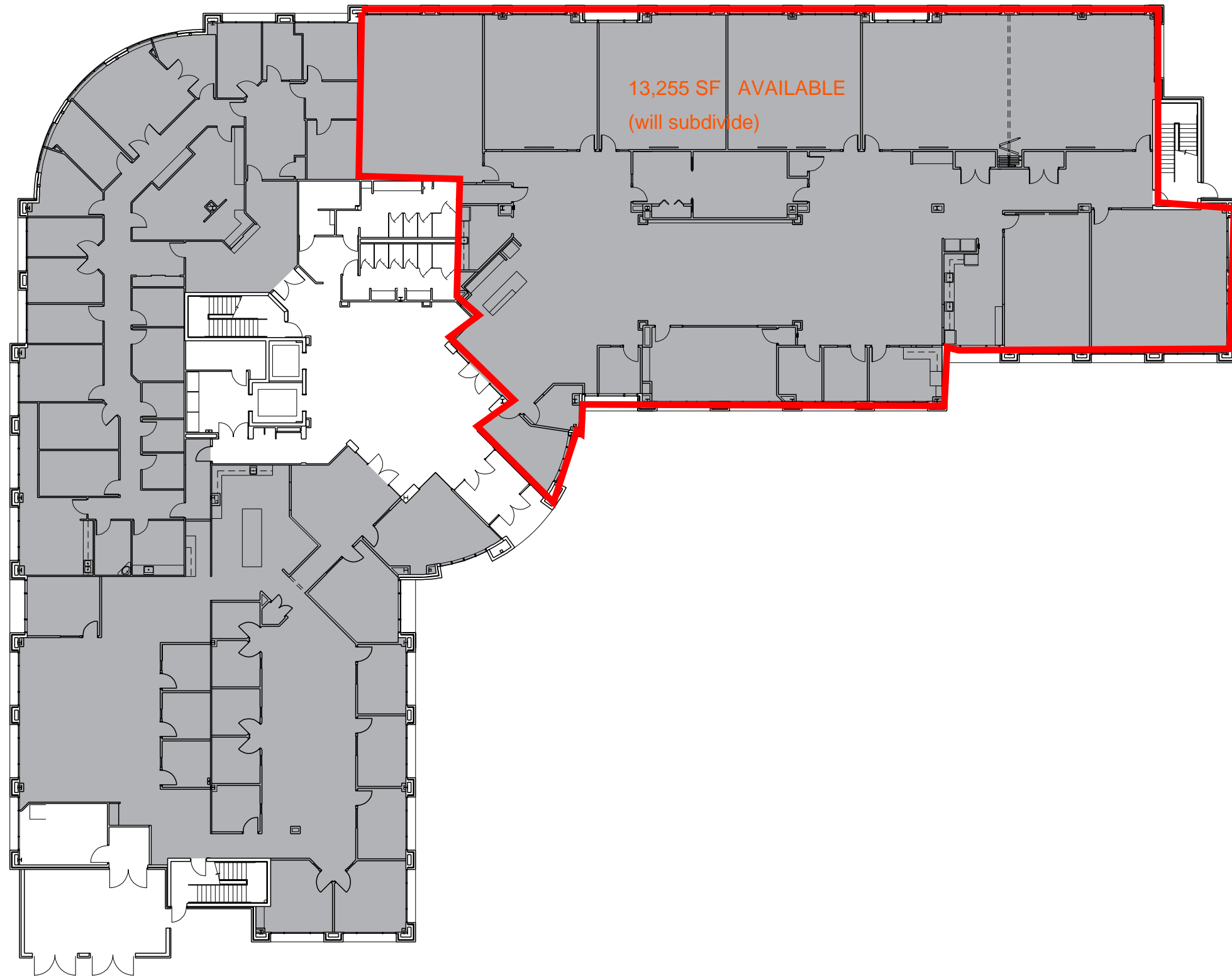
For Lease



Brad L. Kitchen, SIOR  
614.545.2155  
bkitchen@AlterraRE.com

Jeff R. Rudicil (JR)  
614.545.2157  
jr@AlterraRE.com

Alterra Real Estate  
614.365.9000  
www.AltterraRE.com



**FIRST FLOOR - OVERALL**  
5150 EAST DUBLIN-GRANVILLE ROAD